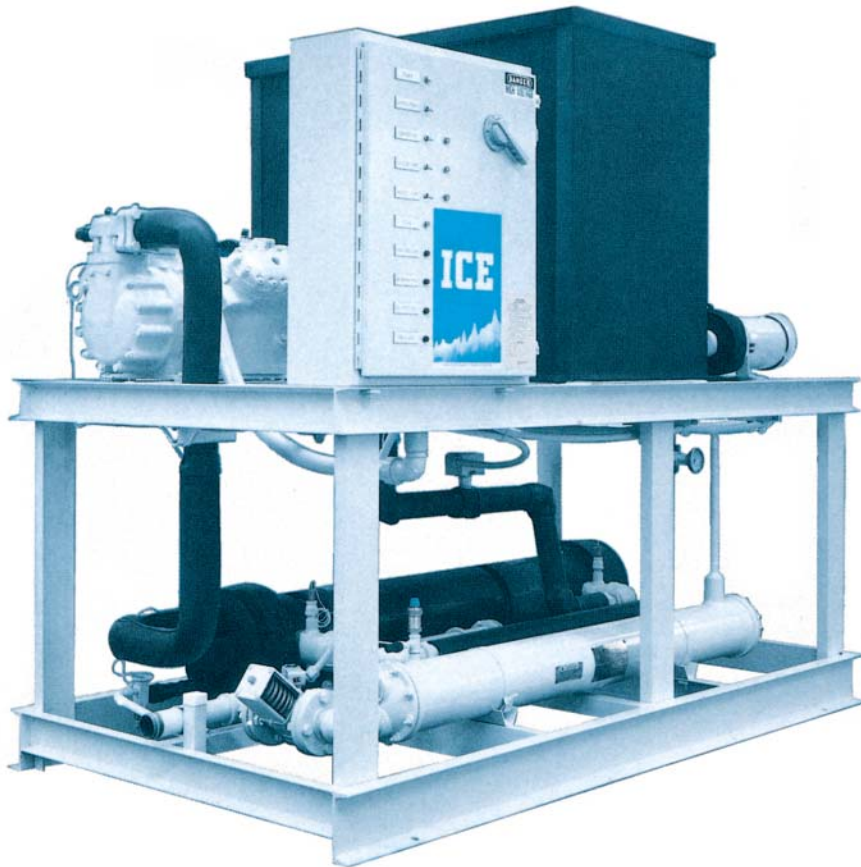


SELF-CONTAINED WATER COOLED CHILLERS



WP SERIES WATER COOLED CHILLERS

ICE WP Series Self-Contained Water-Cooled Chillers deliver the benefit of economical space utilization with the energy efficiency in a water-cooled condenser. The WP Series Chiller incorporates a chiller pump and a separate process water pump that minimizes process temperature gradients. The result enhances product consistency.

The WP Series Chillers offer capacities from 10 to 40 nominal tons. This series is designed for processes requiring chiller fluid temperatures from +20°F to +60°F.

Budzar also designs and manufactures specialized equipment for non-standard applications. Our engineers have extensive experience in process chilling and heating applications for such industries as: chemical, petroleum, plastics rubber, paper, power, steel, food, and pharmaceutical. We take the time to understand your current and future needs and design a solution targeted at high quality and fast payback.



engineering
PRECISION

EXCELLENT RETURN ON INVESTMENT

- Each Budzar unit is designed to maximize the productivity of your process. Budzar quality and reliability provide excellent value for each dollar invested

LOW-COST, SIMPLE OPERATION AND MAINTENANCE

- Scroll compressors feature hot gas capacity control for precise temperature control and extended equipment service life under varying load conditions.
- A.S.M.E. Constructed steel shell and copper tube chiller vessels and evaporators are specifically selected for optimum performance and efficiency
- Programmable Logic Controller provides:

Programmability

- Software may be customized, transferred from a personal computer and updated via programming key
- Displayed Instrumentation Information
 - Pump discharge pressure and flow
 - Compressor suction pressure, temperature and superheat
 - Liquid refrigerant temperature and sub-cooling
 - Evaporator inlet and outlet temperature
 - Compressor pump status

Controller Functions

- Selectable controlled parameter (supply or return temperature)
- Head pressure control via fan motor cycling (air cooled units)

High Technology

- All alarm situation, values of the monitored parameters and the status of the controlled devices are saved for service/maintenance review
- Troubleshooting information is displayed when circumstances require assistance
- The controller identifies marginal operating conditions and adjusts chiller-operation

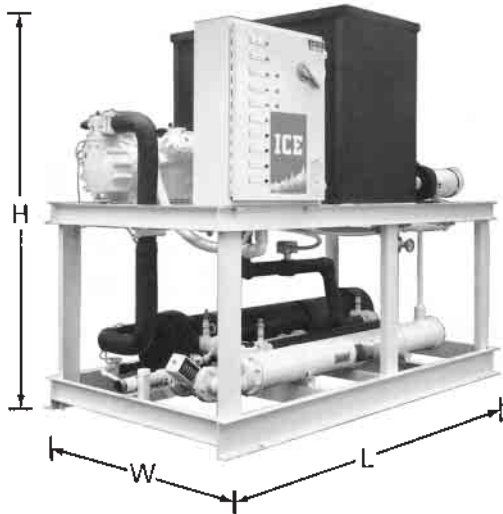
QUICK AND EASY INSTALLATION

- Installation cost is lowered by combining our chillers with water reservoir assemblies. Our units arrive at your plant pre-piped and pre-wired.
- All units are factory tested prior to shipment

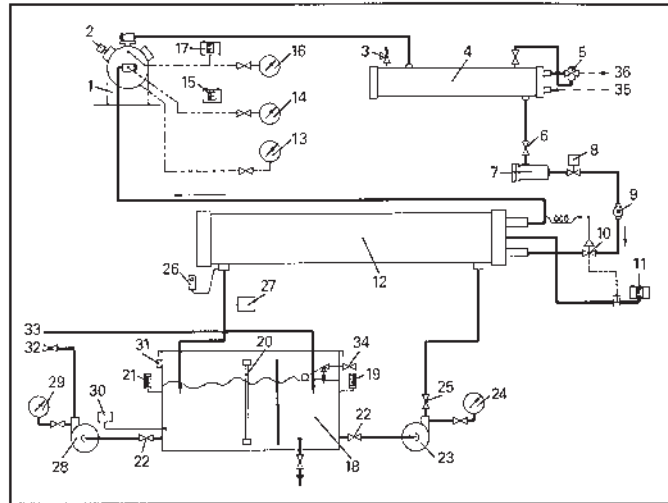


process
TEMPERATURE
control

SELF-CONTAINED WATER COOLED CHILLERS



Model WP-2125 with NEMA 12 electrical enclosure and thru-the-door disconnect switch. Unit illustrates rugged construction and accessibility to components. Insulation is a standard feature.



- | | | |
|-----------------------------------|---|---|
| 1. Compressor | 15. Pumpdown Control | 26. Low Temperature Freezestat |
| 2. Unloader Solenoid | 16. High Pressure Gauge (Discharge) | 27. Flow Switch |
| 3. Relief Valve | 17. High Pressure Switch | 28. Process Pump |
| 4. Water Cooled Condenser | 18. Reservoir, Baffled & Insulated with Cover | 29. Process Water Pressure Gauge |
| 5. Water Regulating Valve | 19. Process Return Thermometer | 30. Chiller Sequencing Thermostat |
| 6. Liquid Line Service Valve | 20. Sight Glass | 31. Over Flow Port |
| 7. Filter Drier | 21. Process Supply Thermometer | 32. Process Water Supply |
| 8. Liquid Line Solenoid Valve | 22. Pump Suction Shut-Off Valve | 33. Process Water Return |
| 9. Sight Glass/Moisture Indicator | 23. Chiller Pump | 34. Make-Up Water Float Valve with Shut-Off Valve |
| 10. Expansion Valve | 24. Chiller Water Pressure Gauge | 35. Condenser Tower Water Inlet |
| 11. Low Pressure Freeze Control | 25. Chiller Water Flow Control/Shut-Off Valve | 36. Condenser Tower Water Outlet |
| 12. Chiller Barrel | | |
| 13. Oil Pressure Gauge | | |
| 14. Low Pressure Gauge (Suction) | | |

WP SERIES WATER-COOLED CHILLERS

Model WP		WP -1110	WP-1515	WP-1620	WP-2430	WP-3640
Capacity @ 50° LWT	TONS	11	16.5	22	33	44
Scroll Compressor	HP	10	15	20	30 (15 ea)	40 (4 at 10 hp)
Chiller Flow @	GPM/PSI	24/25	40/25	52/25	79/35	105/25
Chiller Pump	HP	1	1.5	1.5	2	3
Process Flow	GPM/PSI	24/50	40/50	70/58	79/50	154/53
Process Pump	HP	3	5	5	7.5	7.5
Connections (NPT) Supply	INCHES	1.5	2	2	2.5	3
Return	INCHES	1.5	2	2	2.5	3
Condenser (85°F Tower Water)	GPM	30	48	52	75	105
Connections (NPT)	INCHES	1.25	1.5	1.5	2	2.5
Nameplate Amps @ 460/3/60		29.4	39.2	43.5	61.4	86.3
Total Power Input	KW	15.0	19.3	20.1	31.5	43.0
Unit Efficiency (EER)	BTU/WATT	8.56	9.26	9.97	9.49	10.13
Holding Tank Size	GALLON	150	150	150	220	350
Operating Weight (Approx.)	LBS	3,400	3,600	3,750	4,600	6,750
Shipping Weight (Approx.)	LBS	2,600	2,800	2,850	3,100	3,850
Dimensions (Approx.) L x W x H	INCHES	92 x 38 x 73	92 x 38 x 73	92 x 38 x 73	92 x 50 x 73	115 x 50 x 73

Note: All data based upon cooling water from 60°F to 50°F with 85°F @ 85°F condenser entering water with 10°F rise. Increase capacity 10% for water cooled

Budzar Industries reserves the right to discontinue or change specifications without notice, consistent with sound engineering practice and current industrial standards.



38241 Willoughby Pkwy., Willoughby, Ohio 44094-7582
 (440) 918-0505 • Fax (440) 918-0606 / 918-0707
 www.budzar.com • E-mail: sales@budzar.com



Bulletin #25
10/03